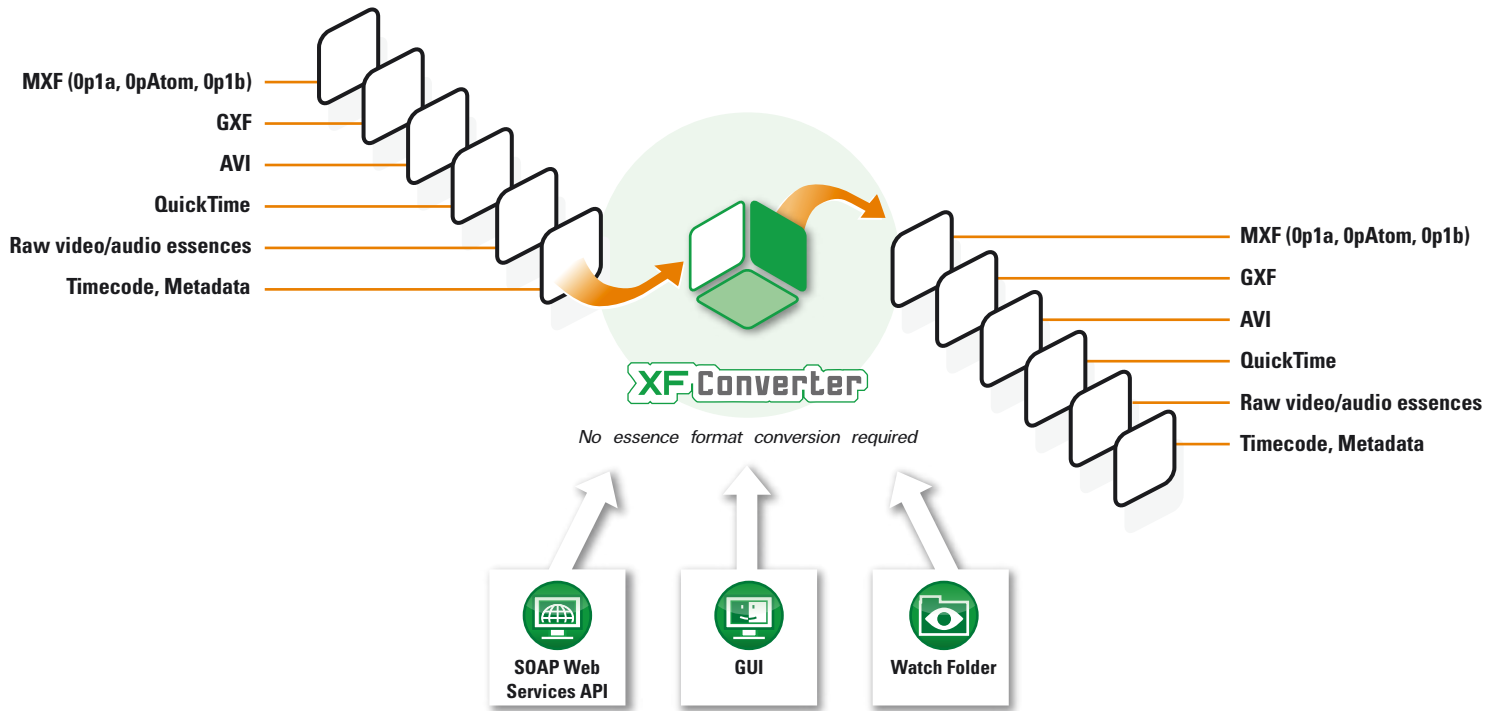


The multi-purpose file converter for enhancing your Workflow



Wrap, unwrap, rewrap and repurpose

The **OpenCube XFConverter** is a cost-effective alternative to traditional transcoding tools. It enables you to rapidly re-wrap container formats and to transfer media files between leading production systems and broadcast servers without modifying their video/audio essences.

Designed to streamline the new tapeless workflows based on file exchange, **XFConverter** is the perfect link for connecting existing equipment and ensuring genuine interoperability in production networks.

Used in automatic detection or manual mode, the **OpenCube XFConverter** will save you valuable time by speeding up your media exchange and optimizing traffic.

Advantages:

- ▶ Convert HD formats (AVC-I, DNxHD, XDCamHD) faster than real time
- ▶ Perform multiple wrapper format conversions
- ▶ Certify compliancy with Avid and Apple equipment
- ▶ Allow Avid Interplay check-in

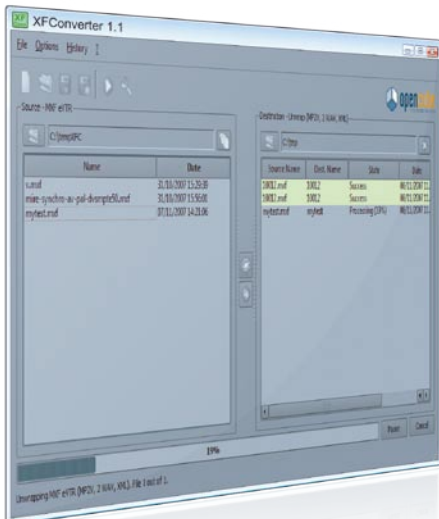
New with version 1.1

- DNxHD support
- XDCamHD Mpeg2 & P2 AVC-I support
- SOAP Web Services API
- Compatible with Avid Media Toolkit (AMT)
- Advanced Timecode management

"The invisible tool that streamlines your workflow."

XFConverter

v1.1



Advanced conversion features

The **XFConverter** offers a wide range of options, including the possibility of generating wrapper formats from compressed raw essence, and of performing inter-file format conversion and essence extraction.

XF Converter is an ideal solution for digital migrations that require the mixing of old and new HD/SD production systems.

Its complete support of MXF, based on the **OpenCube MXF Toolkit**, and its advanced GXF, QuickTime, AVI management capabilities make it a powerful module for production workflows based on heterogeneous systems.

The files generated are seamlessly exchanged with the tools in your existing HD or SD production facilities, whether broadcast servers, editing tools or archiving systems.

XFConverter provides optimum interoperability with almost all of the equipment currently available on the market: XDCam, P2 Camcorders, NLE working stations (Avid, Apple...).

A simple and scalable application

The **XFConverter** is managed via a simple and intuitive GUI. Once the application is configured, all you have to do is launch your conversions manually or activate the detection module. The rest of the process is carried out automatically and with 24/7 reliability.

Advanced functions make it easy for you to choose the type of media you want generated, the audio tracks to be selected and the destination folders.

An advanced plug-in management feature makes the **XFConverter** a flexible and expandable solution.

The application is entirely open: it can be easily connected to a central storage and to all existing network infrastructures.

Key features

Container formats (*)

- MXF Op1a, OpAtom, Op1b ext. ref.
- Interplay check-in
- GXF
- QuickTime, QuickTime ext. ref.
- AVI
- Wave, Aiff

Interoperability with

- Camcorders: P2, XDCam,...
- NLE Avid MXF OpAtom, Final Cut Pro,...
- Video servers: K2, Omneon,...

Video/audio essence formats

- Mpeg2, Mpeg2HD, Mpeg2 LongGop, Mpeg4
- D10, IMX 30, 40, 50 Mbits
- DV, DVCam, DVCPro, DVCProHD
- DNxHD
- AVC-I
- Wave, Aiff, A-Law, AES3, AES3-8 channels

Applications

- Wrapping, Unwrapping, Re-wrapping
- Easy-to-use GUI
- SOAP Web Services and C++ API
- Automated recognition module (Watch Folder)
- Plug-in management
- XML project management
- Intuitive selection of audio tracks
- Log Notification

Minimum system requirements

- Windows XP & Vista SP2, PC2, 4Ghz, 512 Mo RAM

[*] Available as an option

OpenCube Technologies SAS has significant expertise and experience in providing flexible and cost-effective MXF-format solutions, as well as MXF and HDTV-standard media content management services.

The company develops HD/SD ingest gateways and innovative advanced technology applications for streamlined workflows and for effectively managing media content lifecycles, including capture and digitization, delivery and archive, display and record, convert, re-purpose and re-use.

*Specifications are subject to change without prior notice.
© 2009 – OpenCube Technologies SAS – all rights reserved.
All trademarks are the properties of their respective owners.*

Information:

Download
a free trial version at
www.mxftk.com

Buy online
<http://store.opencubetech.com/en/>



OpenCube Technologies SAS
Parc Technologique du Canal - 9, avenue de l'Europe - 31520 Ramonville St Agne (Toulouse) - France [EU]
Tel: +33 (0)561 285 606 - Fax: +33 (0)561 285 635
<http://www.opencubetech.com> - contact@opencubetech.com